

AvilaCanyon

ESTATES



LOT 4, PLAN 4

Modern Elegance in Nature

Discover the sophisticated elegance of Lot 4, Plan 4 at Avila Canyon Estates. This luxurious contemporary design harmonizes with the stunning natural surroundings of Avila Canyon. Created for those who appreciate exquisite craftsmanship and a refined lifestyle, this residence offers unmatched comfort and sophistication.

CCB.Homes/AvilaCanyon

In an effort to meet consumer expectations, coastal community builders reserves the right to make changes or modifications to maps, plans, specifications, materials, features, and colors without notice. Please refer to the full disclaimer on the last page for details. Coastal Community Builders, Inc.

CCB

Coastal
Community
Builders

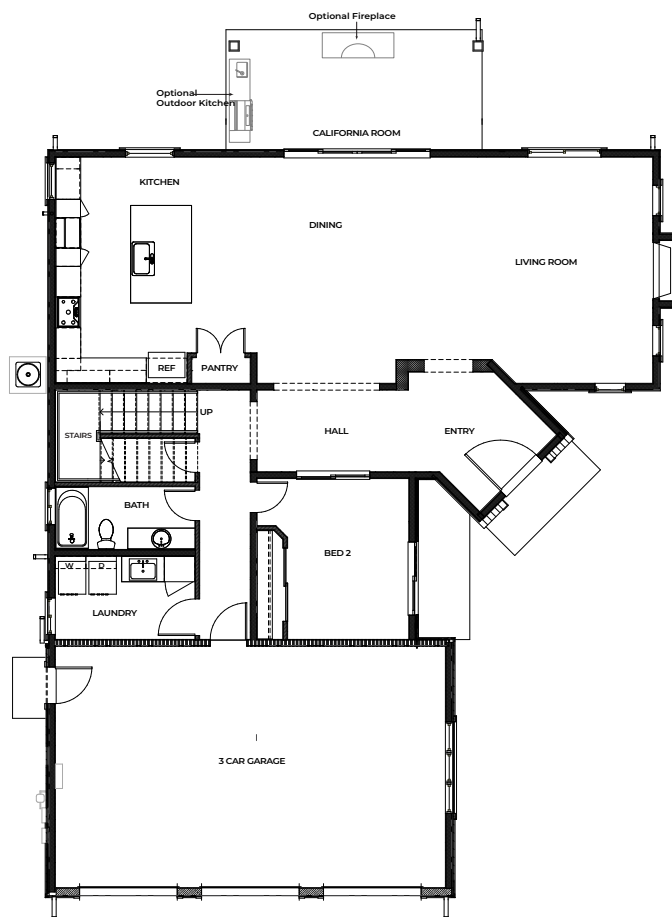
DRE# 01266964

Exceptional Living: Your Floorplan

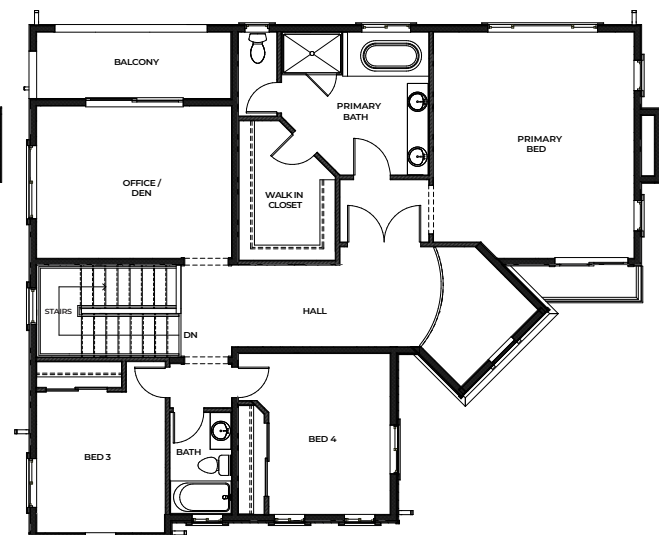
Total Area: 3,139 sq. ft.

Step into 3,139 sq. ft. of meticulously crafted space in Lot 4. This two-story home features four bedrooms, an office or den, and three full bathrooms. The open floorplan seamlessly integrates indoor and outdoor living, with a spacious living area, a gourmet kitchen, and a California Room with optional features like an outdoor fireplace and kitchen. High-end finishes and state-of-the-art appliances ensure both luxury and convenience.

- **Bedrooms: 4**
- **Bathrooms: 3 baths**
- **Garage Spaces: 3**
- **Ceilings: 10'**
- **Large Open Kitchen**



GROUND FLOOR



SECOND FLOOR

In an effort to meet consumer expectations, coastal community builders reserves the right to make changes or modifications to maps, plans, specifications, materials, features, and colors without notice. Please refer to the full disclaimer on the last page for details. Coastal Community Builders, Inc.

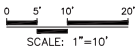
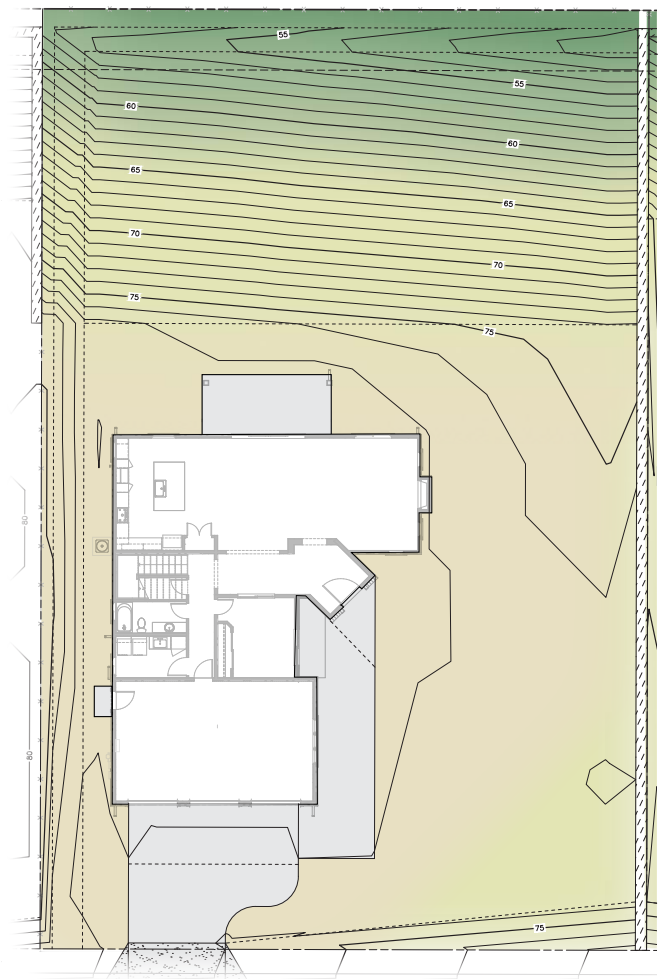
Scenic Beauty & Spacious Living

15,498.3 sq. ft. – Expansive Estate Lot

Lot 4 offers a serene private retreat with a unique elevation, providing breathtaking views of the lush Avila Canyon landscapes. The spacious backyard is perfect for creating your dream outdoor living area, from a tranquil garden oasis to a luxurious patio for gatherings, all set against a picturesque hillside backdrop.

77.74' = Finished Floor Elevation
(concrete floor finished elevation)

76.9' = Finished PAD Elevation
(dirt finished grading elevation)



AVILA CANYON ESTATES
LOT 4

In an effort to meet consumer expectations, coastal community builders reserves the right to make changes or modifications to maps, plans, specifications, materials, features, and colors without notice. Please refer to the full disclaimer on the last page for details. Coastal Community Builders, Inc.

Community Map & Your Home

Strategically located for both privacy and convenience, Lot 4 is a prime location within Avila Canyon Estates. The community map highlights Lot 4's placement, offering a peaceful retreat while maintaining connectivity within this exclusive community.



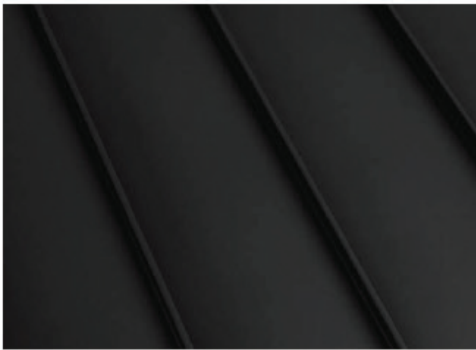
In an effort to meet consumer expectations, coastal community builders reserves the right to make changes or modifications to maps, plans, specifications, materials, features, and colors without notice. Please refer to the full disclaimer on the last page for details. Coastal Community Builders, Inc.

Sophisticated Colors & Materials

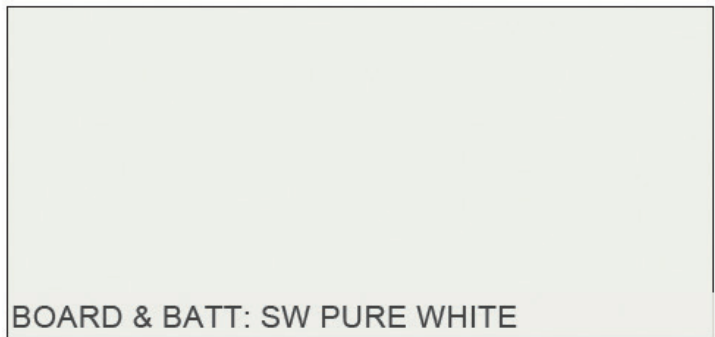
Lot 4 features a refined color palette that complements its luxury contemporary design. Exterior finishes are highlighted by El Dorado Stone: Cut Course Cannonade, adding a touch of modern elegance. The roofing uses eco-friendly materials in 'Eagle Pondersosa Sierra Madre' with an accent roof in 'Matte Black,' ensuring both durability and style. The front door adds a pop of color with SW Carriage Door, enhancing the overall aesthetic of this stunning home.



ROOF: EAGLE PONDERSOA SIERRA MADRE



ACCENT ROOF: MATTE BLACK



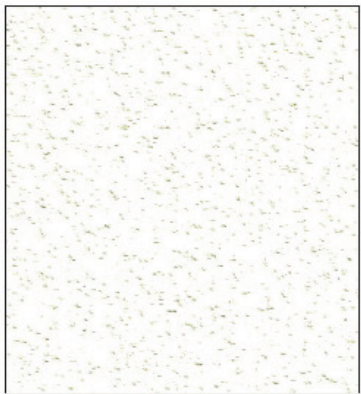
BOARD & BATT: SW PURE WHITE



FRONT DOOR:
SW CARRIAGE DOOR



FASCIA: SW CAVIAR



STUCCO: GLACIER



EL DORADO STONE:
CUT COURSE CANNONADE

In an effort to meet consumer expectations, coastal community builders reserves the right to make changes or modifications to maps, plans, specifications, materials, features, and colors without notice. Please refer to the full disclaimer on the last page for details. Coastal Community Builders, Inc.

Explore the Exquisite Features

Unparalleled Craftsmanship and Luxurious Details

Interior Detailing

- **Ceilings:** 10 ft. ceilings throughout
- **Doors:** 8 ft. entry doors, 8 ft. interior doors
- **Cabinetry:** Stain Grade Shaker Cabinets
- **Countertops:** Premium quartz countertops with a 6" splash
- **Faucets:** 8" spread bathroom faucets in the master bath, under-mount sinks in secondary baths
- **Safety:** Overhead fire suppression system
- **Hardware:** Satin Nickel finish hardware throughout
- **Walls:** Skip trowel hand textured walls
- **Lighting:** Prewired for custom lighting
- **Flooring:** Luxury Vinyl Plank (LVP) throughout all living areas, carpet in bedrooms
- **Paint:** Spare white velvet paint throughout
- **Fireplace:** Superior 55" linear gas fireplace

Designer Upgrades

- **Appliances:** Upgraded appliance package options
- **Design Packages:** PB Modern Upgrade, Modern Farmhouse Upgrade, RH Lux Upgrade, and Ultra Modern Upgrade
- **Outdoor Add-ons:** California Room gas grill and fireplace (optional)

Exterior Features

- **Architecture:** Distinctively crafted in Modern Farmhouse & Contemporary styles
- **Parking:** Garage space and design varies by plan
- **Outdoor Space:** California Room (optional)
- **Gutters:** Full wrap as needed, with downspouts
- **Landscape:** Backs to open space with rolling hills

Energy-Saving Elements

- **Windows:** Dual-pane, low-E vinyl windows and sliding doors
- **Plumbing:** Water-saving, low-flow commodes
- **Thermostat:** Digital programmable thermostat
- **Water Heater:** Tankless water heater with built-in recirculating pump
- **Lighting:** LED recessed lighting
- **Heating:** 95% efficient FAU system
- **HVAC:** Prewired for future AC condenser
- **EV:** Preplumbed for EV charger

Kitchen Design

- **Culinary Space:** Elegant and spacious gourmet kitchen with oversized island
- **Countertops:** Premium quartz countertops for effortless upkeep
- **Backsplash:** 6" continued quartz backsplash
- **Appliances:** GE Cafe Energy Star-rated appliances
- **Refrigerator:** Pre-plumbed for water at refrigerator bay

Primary Suite

- **Bedroom:** Spacious bedroom quarters
- **Master Bath Shower:** 12x24 tiled to the ceiling with nickel framed enclosure
- **Master Bath Countertops:** Quartz countertops with spacious dual sinks
- **Master Bath Tub:** 70" free-standing tub
- **Closet:** Generous walk-in wardrobe



In an effort to meet consumer expectations, Coastal Community Builders reserves the right to make changes or modifications to maps, plans specifications, materials, features, and colors without notice. All renderings are artist conceptions and are not intended to be literal depictions of the buildings, fences, walks, driveways or landscaping. Special wall and window treatments, upgraded floor coverings, softscape, hardscape, landscape, and other items featured in and around the model homes are decorator suggested and not included in the purchase price. Residents are automatically included in the Homeowners' Association and are subject to Special Assessments and Community Facility Fees. Ask your Sales Representative for details. Plans to build out this project as proposed are subject to change without notice. Coastal Community Builders, Inc. DRE #01266964