

AvilaCanyon

ESTATES



LOT 6, PLAN 1

Luxury Farmhouse Living

Experience the pinnacle of luxurious living in this 2,485 sq. ft. single-story home that blends modern farmhouse and contemporary design. This exquisitely crafted home offers luxurious living spaces that blend contemporary architecture with the rustic charm of a farmhouse. Perfect for those who appreciate fine details and a bespoke lifestyle, this residence promises unparalleled comfort and sophistication.

CCB.Homes/AvilaCanyon

In an effort to meet consumer expectations, coastal community builders reserves the right to make changes or modifications to maps, plans, specifications, materials, features, and colors without notice. Please refer to the full disclaimer on the last page for details. Coastal Community Builders, Inc.

CCB

Coastal
Community
Builders

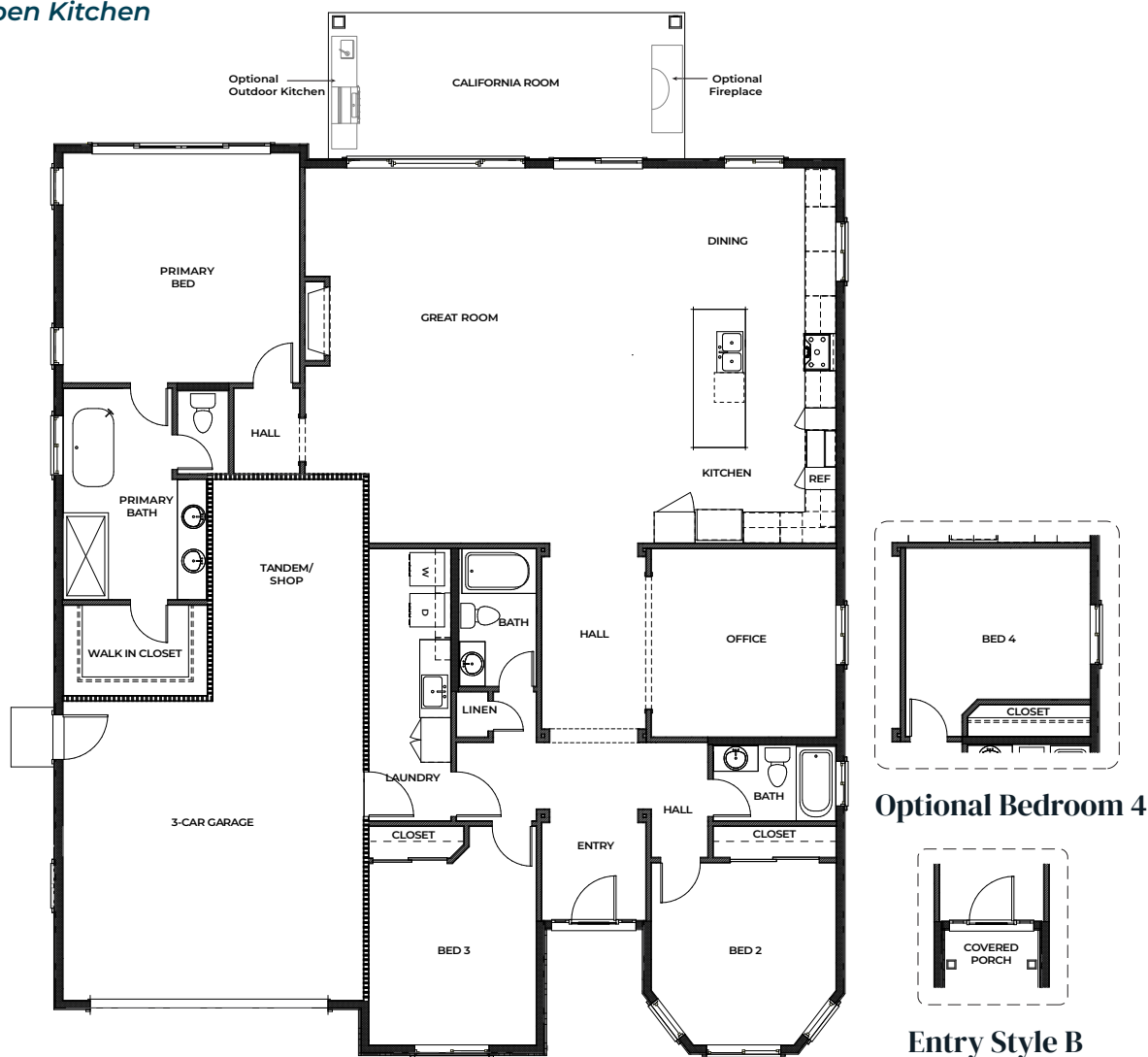
DRE# 01266964

Spacious and Inviting Floorplan

Total Area: 2,485 sq. ft.

Step into 2,485 sq. ft. of meticulously crafted living space in Lot 6. This single-level home features three bedrooms, a dedicated office that can be converted into an optional fourth bedroom, and three full bathrooms. The open floorplan enhances the flow and functionality, with a modern kitchen that opens into a grand living area, perfect for entertaining and relaxation. High-end finishes and state-of-the-art appliances ensure both comfort and style.

- **Bedrooms: 3 (optional 4th bedroom)**
- **Bathrooms: 3 baths**
- **Garage Spaces: 3-car tandem garage**
- **Ceilings: 10'**
- **Large Open Kitchen**



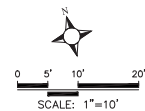
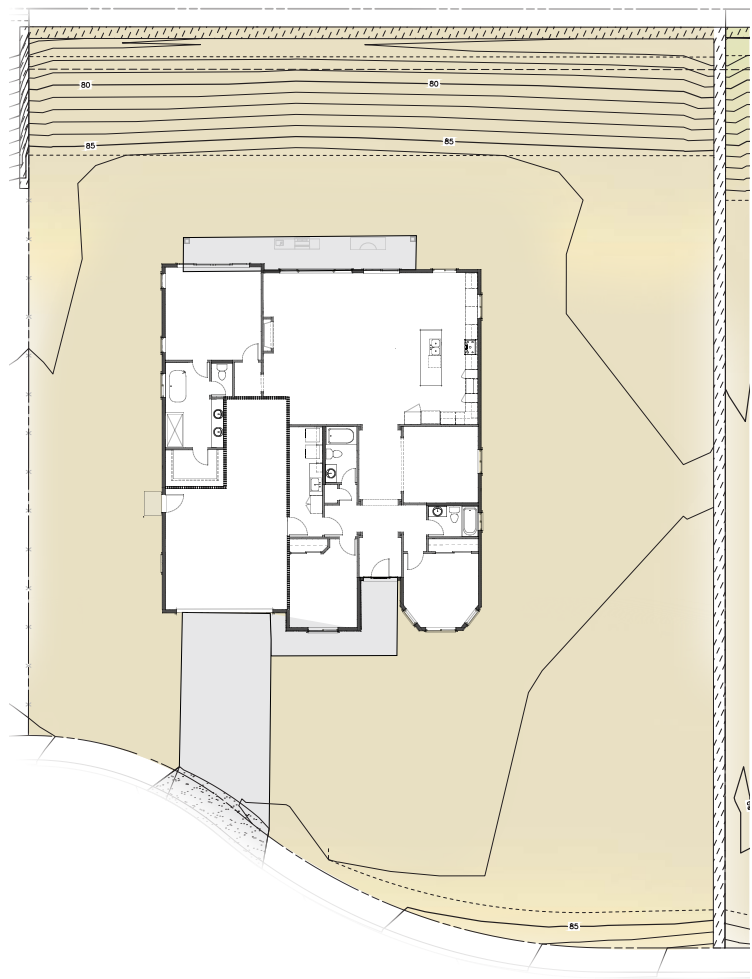
In an effort to meet consumer expectations, coastal community builders reserves the right to make changes or modifications to maps, plans, specifications, materials, features, and colors without notice. Please refer to the full disclaimer on the last page for details. Coastal Community Builders, Inc.

Expansive & Scenic

16,317.4 sq. ft. – Expansive Estate Lot

Lot 6 offers a serene private retreat with a generous lot size and beautiful views. This premium lot provides ample space for outdoor living, from a tranquil garden to a luxurious patio area, set against the picturesque backdrop of Avila Canyon.

86.6' = Finished PAD Elevation
(dirt finished grading elevation)



AVILA CANYON ESTATES
LOT 6

In an effort to meet consumer expectations, coastal community builders reserves the right to make changes or modifications to maps, plans, specifications, materials, features, and colors without notice. Please refer to the full disclaimer on the last page for details. Coastal Community Builders, Inc.

Community Map & Your Home

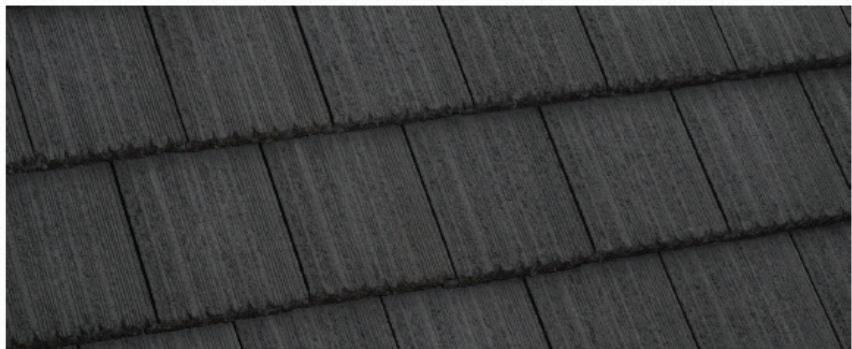
Strategically located within Avila Canyon Estates, Lot 6 offers a peaceful retreat while maintaining connectivity within this exclusive community. The community map highlights Lot 6's placement, ensuring privacy and convenience.



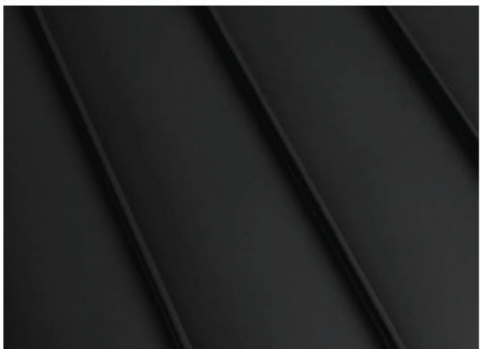
In an effort to meet consumer expectations, coastal community builders reserves the right to make changes or modifications to maps, plans, specifications, materials, features, and colors without notice. Please refer to the full disclaimer on the last page for details. Coastal Community Builders, Inc.

Sophisticated Colors & Materials

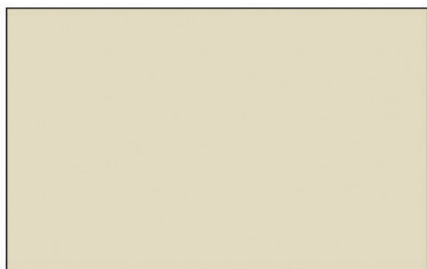
Lot 6 features a refined color palette that complements its luxury farmhouse design. Exterior finishes are highlighted by Coronado Stone: Northland, adding a touch of rustic elegance. The roofing uses eco-friendly materials in 'Matte Black,' ensuring both durability and style. Warm wood accents enhance the overall aesthetic of this charming home.



ROOF: CHARCOAL CONC. TILE



ACCENT ROOF: MATTE BLACK



BOARD & BATT PAINT:
SW EAGLET BEIGE



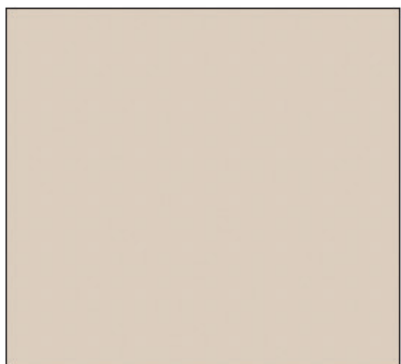
ENTRY DOOR:
SW HOMESTEAD BROWN



ACCENT: WARM WOOD



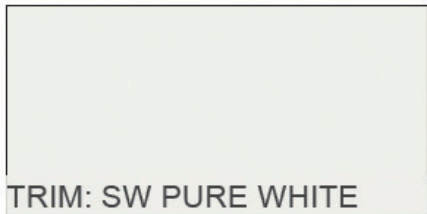
FACIA: SW CAVIAR



STUCCO:
CLAY



CORONADO STONE
NORTHLAND



TRIM: SW PURE WHITE

In an effort to meet consumer expectations, coastal community builders reserves the right to make changes or modifications to maps, plans, specifications, materials, features, and colors without notice. Please refer to the full disclaimer on the last page for details. Coastal Community Builders, Inc.

Explore the Exquisite Features

Unparalleled Craftsmanship and Luxurious Details

Interior Detailing

- **Ceilings:** 10 ft. ceilings throughout
- **Doors:** 8 ft. entry doors, 8 ft. interior doors
- **Cabinetry:** Stain Grade Shaker Cabinets
- **Countertops:** Premium quartz countertops with a 6" splash
- **Faucets:** 8" spread bathroom faucets in the master bath, under-mount sinks in secondary baths
- **Safety:** Overhead fire suppression system
- **Hardware:** Satin Nickel finish hardware throughout
- **Walls:** Skip trowel hand textured walls
- **Lighting:** Prewired for custom lighting
- **Flooring:** Luxury Vinyl Plank (LVP) throughout all living areas, carpet in bedrooms
- **Paint:** Spare white velvet paint throughout
- **Fireplace:** Superior 55" linear gas fireplace

Designer Upgrades

- **Appliances:** Upgraded appliance package options
- **Design Packages:** PB Modern Upgrade, Modern Farmhouse Upgrade, RH Lux Upgrade, and Ultra Modern Upgrade
- **Outdoor Add-ons:** California Room gas grill and fireplace (optional)

Exterior Features

- **Architecture:** Distinctively crafted in Modern Farmhouse & Contemporary styles
- **Parking:** Garage space and design varies by plan
- **Outdoor Space:** California Room (optional)
- **Gutters:** Full wrap as needed, with downspouts
- **Landscape:** Backs to open space with rolling hills

Energy-Saving Elements

- **Windows:** Dual-pane, low-E vinyl windows and sliding doors
- **Plumbing:** Water-saving, low-flow commodes
- **Thermostat:** Digital programmable thermostat
- **Water Heater:** Tankless water heater with built-in recirculating pump
- **Lighting:** LED recessed lighting
- **Heating:** 95% efficient FAU system
- **HVAC:** Prewired for future AC condenser
- **EV:** Preplumbed for EV charger

Kitchen Design

- **Culinary Space:** Elegant and spacious gourmet kitchen with oversized island
- **Countertops:** Premium quartz countertops for effortless upkeep
- **Backsplash:** 6" continued quartz backsplash
- **Appliances:** GE Cafe Energy Star-rated appliances
- **Refrigerator:** Pre-plumbed for water at refrigerator bay

Primary Suite

- **Bedroom:** Spacious bedroom quarters
- **Master Bath Shower:** 12x24 tiled to the ceiling with nickel framed enclosure
- **Master Bath Countertops:** Quartz countertops with spacious dual sinks
- **Master Bath Tub:** 70" free-standing tub
- **Closet:** Generous walk-in wardrobe



In an effort to meet consumer expectations, Coastal Community Builders reserves the right to make changes or modifications to maps, plans specifications, materials, features, and colors without notice. All renderings are artist conceptions and are not intended to be literal depictions of the buildings, fences, walks, driveways or landscaping. Special wall and window treatments, upgraded floor coverings, softscape, hardscape, landscape, and other items featured in and around the model homes are decorator suggested and not included in the purchase price. Residents are automatically included in the Homeowners' Association and are subject to Special Assessments and Community Facility Fees. Ask your Sales Representative for details. Plans to build out this project as proposed are subject to change without notice. Coastal Community Builders, Inc. DRE #01266964